



Abbe Refractometers



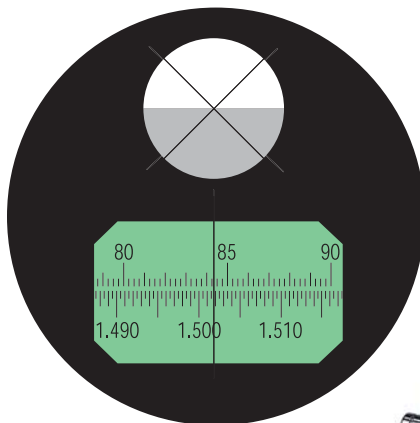
Model C10

- **Benchtop Abbe Precision**
- **Liquid & Solids Testing**
- **Brix & Refractive Index Scales**

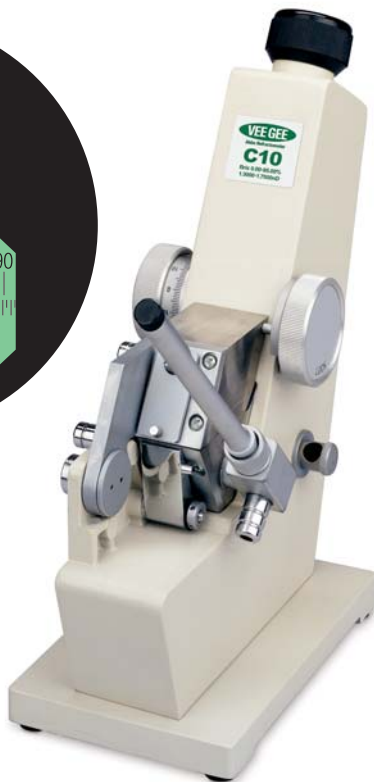
The VEE GEE Model C10 Abbe Refractometer is an excellent instrument for the Refractive Index (nD) analysis of liquids, glass, plastic, & film.

Easy to Use. Operation consists of placing a sample on the prism; while looking through the eyepiece, the control knob is turned until the shadowline is centered in the crosshairs (see image below left); the reading is taken where the vertical line crosses the scale. Calibrates with water.

Industrial Features. Oversized, easy-to-read scale; Refractive Index (nD) & Brix scales; primary & secondary prisms; color compensator dial; large measurement dial; focusable eyepiece.



Scale View



Prism Temperature Control. Featuring 2 circulator nozzles for the primary prism and 2 for the secondary prism, Model AR10 can be connected to a circulating bath to accurately regulate prism temperature. The prism temperature is displayed on the external glass thermometer. The effective temperature range is 0-70°.

Film Testing. Transparent or translucent film samples can be measured with the use of a glass standard (aids in the illumination of the sample), contact liquid (adheres the sample to the glass standard and to the primary prism), and an external sodium light source (sold separately).

Note: The refractive index (nD) value of the sample must be lower than that of the contact liquid and the glass standard. The included bromonaphthalene contact liquid has a refractive index (nD) value of 1.6300. The included glass standard has a refractive index value (nD) of 1.5163.

Glass & Plastic Testing. Transparent or translucent glass and plastic samples can be measured with the use of a contact liquid (adheres the sample to the primary prism), and an external sodium light source (sold separately).

Note: The refractive index (nD) of the sample must be lower than that of the contact liquid. The included bromonaphthalene contact liquid has a refractive index (nD) value of 1.6300.

Specifications

Measuring System:	Optical Refraction Critical Angle Detection	
Measuring Range:	Refractive Index (nD):	1.3000-1.7000
	Brix:	0.0-95.0%
Resolution:	Refractive Index (nD):	0.0005
	Brix:	0.25%
Accuracy:	Refractive Index (nD):	±0.0003
	Brix:	±0.15%
Dispersion (nF-nC):	Dial Readings w/ Conversion Charts	
Ambient Temperature:	5-35 °C	
Measuring Temperature:	0.0-70.0 °C	
Calibration Liquid / Medium:	Distilled Water Glass Standard, 1.5163 nD (w/ Bromonaphthalene Contact Liquid)	
Prism:	Optical Glass	
Prism Housing:	SUS316 Stainless Steel	
Circulator Nozzles:	2 for Primary Prism, 2 for Secondary Prism	
Dimensions:	140 (L) x 90 (W) x 240 (H) mm	
Weight:	2.3kg	
Supplied With:	Glass Thermometer (1 ea.) Glass Standard, 1.5163 nD (1 ea.) Contact Liquid, Bromonaphthalene, 4ml Bottle (1 ea.) Scale Adjustment Tool (1 ea.) Carrying Case (1 ea.) Instruction Manual (1 ea.)	

VEE GEE Ordering Information

Cat. No.	Model	Scale	Range	Resolution	Accuracy	Dimensions / Weight
C10	C10	Refractive Index (nD)	1.3000-1.7000 nD	0.0005 nD	±0.0003 nD	140 (L) x 90 (W) x 240 (H) mm / 2.3kg
		Brix	0.0-95.0%	0.25%	±0.15%	



VEE GEE Scientific, Inc.

13600 NE 126th Place, Suite A • Kirkland, WA 98034
(800) 423-8842 • (425) 823-4518 • Fax: (425) 820-9826
www.veege.com • e-mail: sales@veege.net